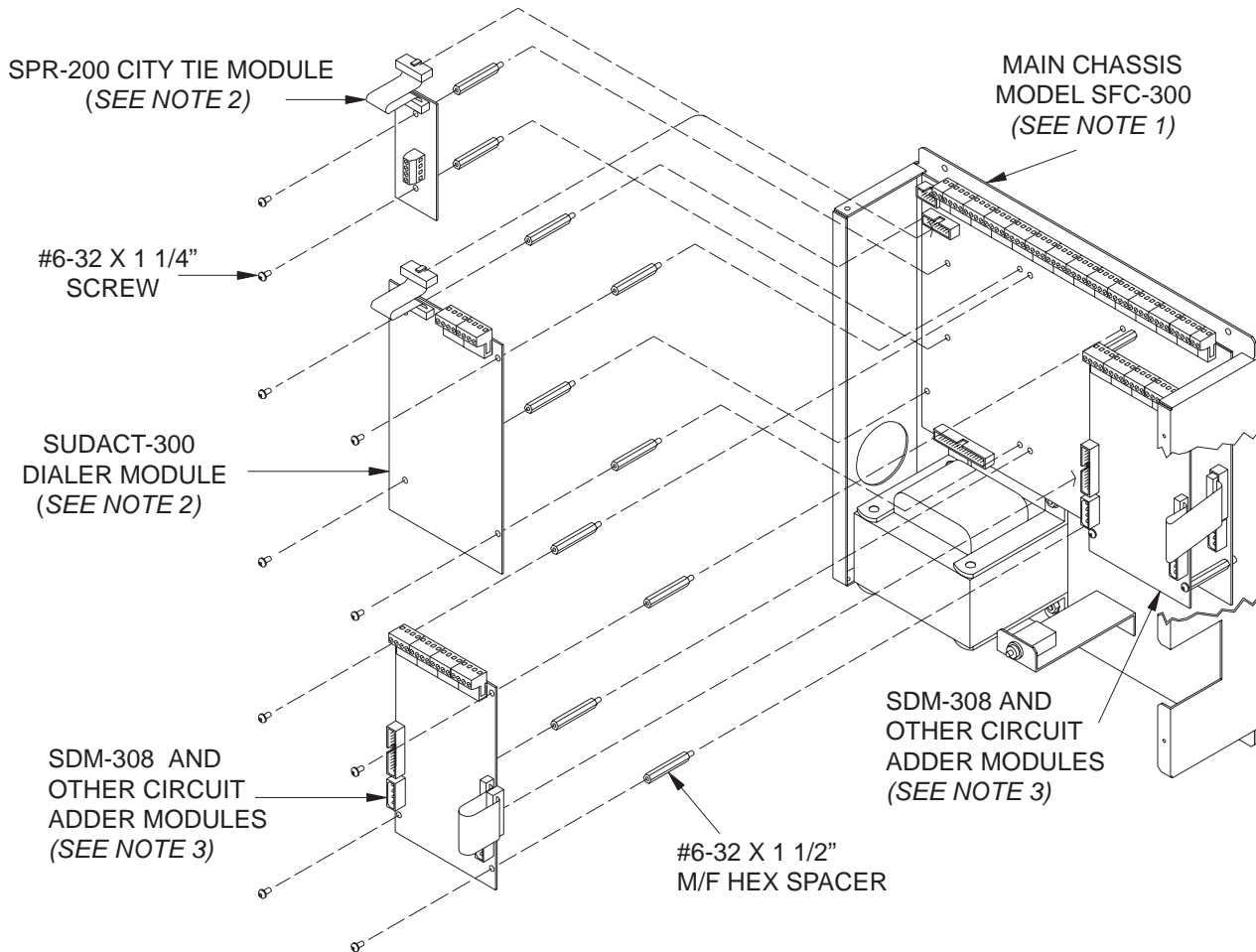


Module Mounting Locations

For the SFC-300 Fire Alarm Panel, the SDM-308 may be mounted in the same location as other adder modules. Refer to Figure 1 below for mounting locations.

i **Note:** Only the last circuit adder module should have a jumper plug on its continuity jumper; all others must be left without a jumper plug.

Figure 1: Module Mounting Locations

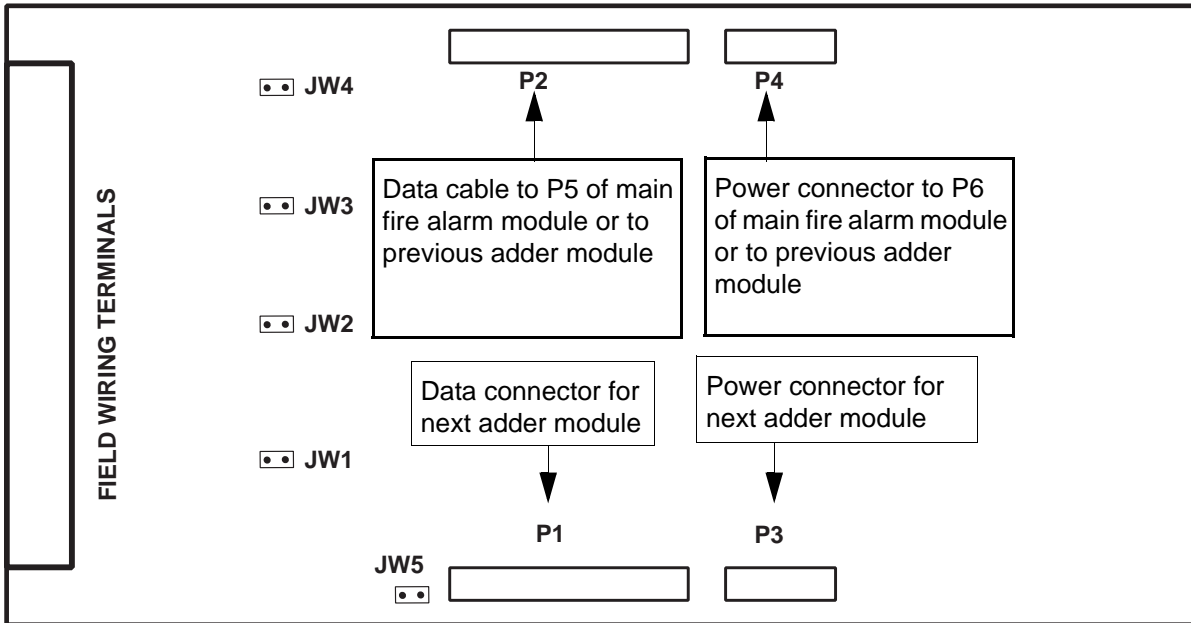


i **Notes:**

1. Front plate is not shown.
2. Reserved for SPR-200
3. Other circuit adder modules may be:
 - **SDM-308 Detection Circuit Adder Module**
 - SSG-304 Signal Circuit Adder Module
 - SRM-308 Relay Circuit Adder Module

Terminal and Jumper Locations

Figure 2: SDM-308 8 Detection Adder Module



- JW1:** Install jumper for Class A (Style D) operation of initiating circuits 1 and 2.
- JW2:** Install jumper for Class A (Style D) operation of initiating circuits 3 and 4.
- JW3:** Install jumper for Class A (Style D) operation of initiating circuits 5 and 6.
- JW4:** Install jumper for Class A (Style D) operation of initiating circuits 7 and 8.
- JW5:** Remove continuity jumper if there are any more adder modules installed.

Note: Refer to operating manual of the Fire Alarm Panel such as the SFC-300 for complete and specific details regarding mounting, function selection and wiring.