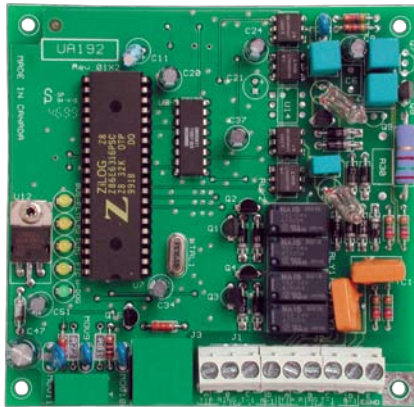


SFC-100 Series Accessories



SUDACT-100

The SFC-100 Series Fire Alarm Control Panels can be configured to meet virtually any requirement. To facilitate this flexibility, the SFC-100 Series panels have a number of add-on modules which allow the system to perform certain functions.

SUDACT-100 Dual Line Digital Dialer

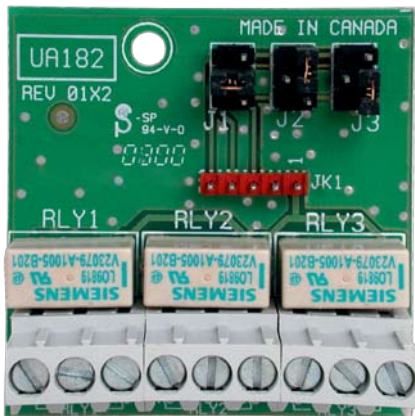
The SUDACT-100 Dual Line Digital Dialer Module allows the SFC-100 Series Fire Alarm Control Panels to use two phone lines to call a Central Station and report all Alarm, Trouble or Supervisory conditions. Requiring two supervised telephone lines, the SUDACT-100 can be programmed to use the Security Industry Association (SIA) Digital Communication Standard (DCS), Ademco Contact ID and 10/20 bps communication protocols. The SUDACT-100 connects to the SFC-100 Series Fire Alarm Control Panels via an RS-485 interface. The MR-2844 Handheld Programmer is required to program the SUDACT-100.

SPR-100 Polarity Reversal/Municipal Box Module

The SPR-100 Polarity Reversal/Municipal Box Module is jumper programmable for polarity reversal operation or Municipal Box operation, Single or Separate Alarm and AC Fail delay. The SUDACT-100 connects to the SFC-100 Series Fire Alarm Control Panels via an RS-485 interface.



SPR-100



SRM-103

SRM-103 Auxiliary Relay Module

The SRM-103 Auxiliary Relay Module provides the SFC-100 Series with three form 'C' configurable auxiliary relays. Each relay is jumper programmable to activate on 'Alarm', 'Supervisory' or 'Trouble' mode and is rated for 30VDC @ 2 Amp max.



S24005



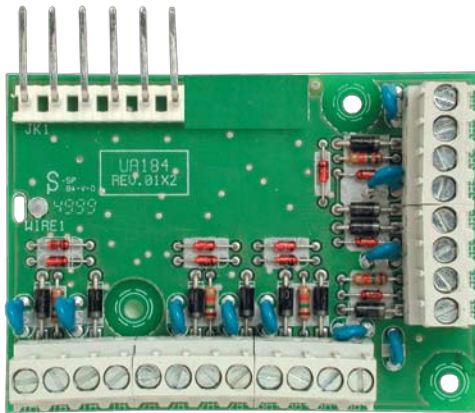
S24005



7165-1665:104

MEAS
approved

71-08-E



SICA-105

SICA-102/SICA-105 Class A (Style D) Input Converter Module

The SICA-102 Zone Input Converter Module converts the two zones on the FA-262 fire alarm control panel from Class 'B' (Style 'B') to Class 'A' (Style 'D'). The SICA-105 Zone Input Converter Module converts the five zones on the FA-265 fire alarm control panel from Class 'B' (Style 'B') to Class 'A' (Style 'D'). Both modules mount in the corresponding FA-262/265 fire alarm back box.

MR-2844 Handheld Programmer

The MR-2844 is an LCD keypad style programmer specifically design to program the Dual Line Dialer and the SFC-100 Series fire alarm control panels. The programmer includes a power/communications cable which plugs into the Dual Line Dialer. Once connected, the programmer will power up and is ready to program the dialer and the panel.



MR-2844

Ordering Information

Model	Description
SICA-102	Two Zone Style D (Class A) Input Converter Module
SICA-105	Five Zone Style D (Class A) Input Converter Module
SRM-103	Auxiliary Relay Module
SPR-100	Polarity Reversal/Municipal Box Module
SUDACT-100	Dual Line Digital Dialer
MR-2844	Handheld Programmer