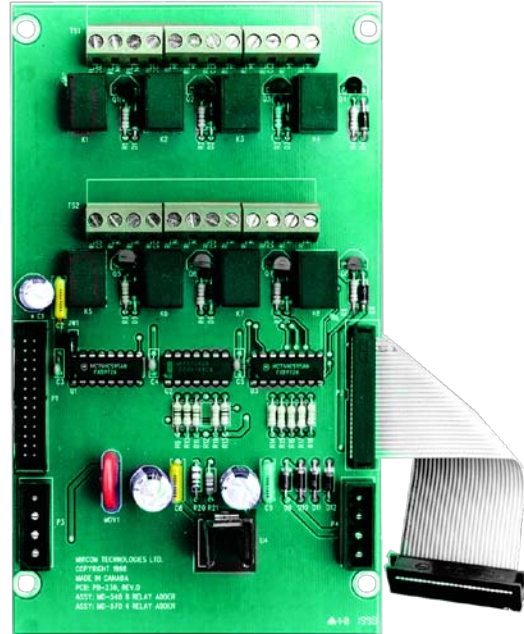


## SFC-300 Auxiliary Modules

The SFC-300 Series Microprocessor Based Fire Alarm System can be configured to meet virtually any requirements. To facilitate this flexibility, the panel has a number of add-on modules which allow the system to perform certain functions.

### SRM-308 Eight Relay Circuit Module

The SRM-308 Eight Relay Circuit Module provides eight programmable Form C relays. Each relay is rated for 28 VDC @ 1 Amp max. Each relay is annunciated for configuration on the front display board of the SFC-300 Series Fire Alarm Control Panel. The SRM-308 Relay Adder Module comes with removeable terminal blocks for easy wiring and servicing.



### SPR-200 Polarity Reversal & City Tie Module

The SPR-200 Polarity Reversal & City Tie Module allows connection to two different types of monitoring systems. The City Tie provides an output of 24 VDC at 210 mA max. The module supervises the City Tie connection and will provide a system trouble if not connected. A terminating resistor is supplied with the module. The Polarity Reversal provides a 24 VDC output for normal condition and a polarity reverse 24 VDC output for alarm. The module is also capable of transmitting a system trouble "Zero Volts." This option is jumper selectable. The output current is limited to 8 mA.



S24005



S24005



7165-1665:102

## Ordering Information

Model	Description
SRM-308	Eight Relay Circuit Module
SPR-200	Polariy Reversal & City Tie Module